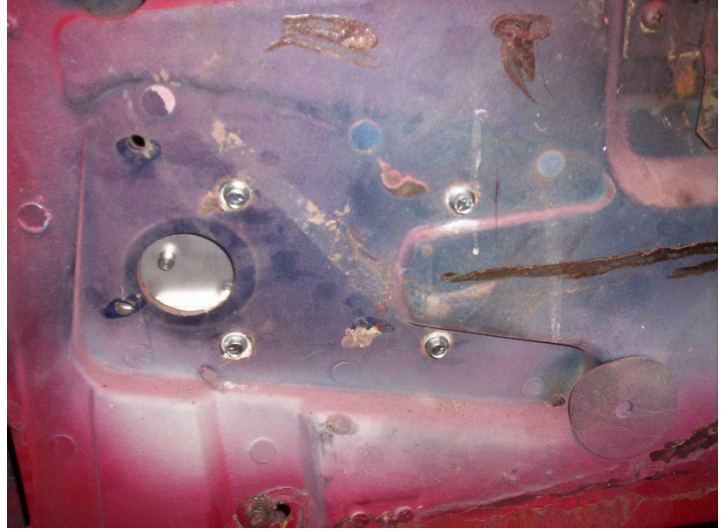
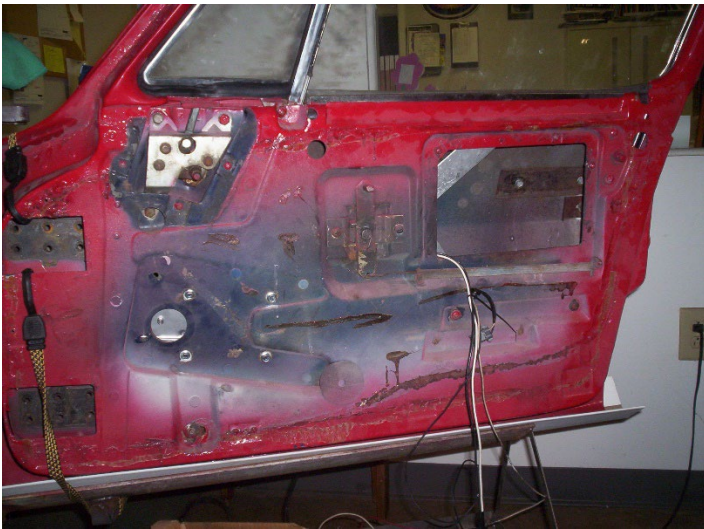




Specialty Power Windows[®]

1963-1967 Corvette Install Instructions

1. Remove the trim panel.
2. Make sure that the window is in the up position.
3. Remove the inner door channel.
4. Wedge something between the glass and the inner door panel to keep the glass from falling or have someone hold the glass up.
5. Remove the lower glass channel.
6. With the glass in the up position, remove the manual regulator.
7. Lower the glass down and let it rest at the bottom of the door.
8. Pull the top of the vent assembly back to reveal a screw that holds the top of the vent assembly together and remove screw.
9. Pull the top of the vent assembly apart. This will allow you to remove the glass.
10. Remove the glass to give the space needed to fit the new power unit.
11. The new power unit will bolt up using the original manual regulator mounting holes.
12. Install the inner channel onto the trailing arm and reinstall back onto the inner panel in original holes.
13. Reinstall glass and the vent assembly.
14. Install the lower glass channel onto the remaining two rollers and bolt back onto the bottom of the glass.
15. Use the test lead provided to power unit up and down before wiring up.



PHONE: (478) 994-9248

TECH EMAIL: tech@spwkits.com

SALES EMAIL: sales@spwkits.com

CONTACT US: contact@spwkits.com

www.specialtypowerwindows.com